



**Western Canada & USA — Head Office**  
8717 132<sup>nd</sup> St • Surrey, BC V3W 4P1  
Ph: 604.522.3977 • Fax: 604.522.6806

**Northern BC Division**  
1076 Great St • Prince George, BC V3W 4P1  
Ph: 250.563.0596 • Fax: 250.563.8179

**Toll Free: 1.800.686.6679 • [parts@brunnettemc.com](mailto:parts@brunnettemc.com) • [www.brunnettemc.com](http://www.brunnettemc.com)**

## GRIZZLY HOG MILL 4800 Model Series\* PARTS REORDER FORM

Thank you for your recent order of Grizzly Mill Hog parts. By keeping up with regular maintenance procedures and replacement of worn components, you'll save money and be more likely to increase the service life of your unit. Now is a great time to fill out your parts & service reorder form so that you can easily obtain the replacement parts that you need to keep your Grizzly Mill running at optimum capacity. **Please forward your completed form to our parts department for a quote.**

Company: \_\_\_\_\_ Contact Name: \_\_\_\_\_

Address: \_\_\_\_\_

Phone: \_\_\_\_\_ Email: \_\_\_\_\_

Grizzly Mill Hog: Model # \_\_\_\_\_ Serial # \_\_\_\_\_

- Refer to Grizzly Mill Parts Illustration on reverse for corresponding item #s.
- Please write in Part #s in blank spaces – if known.

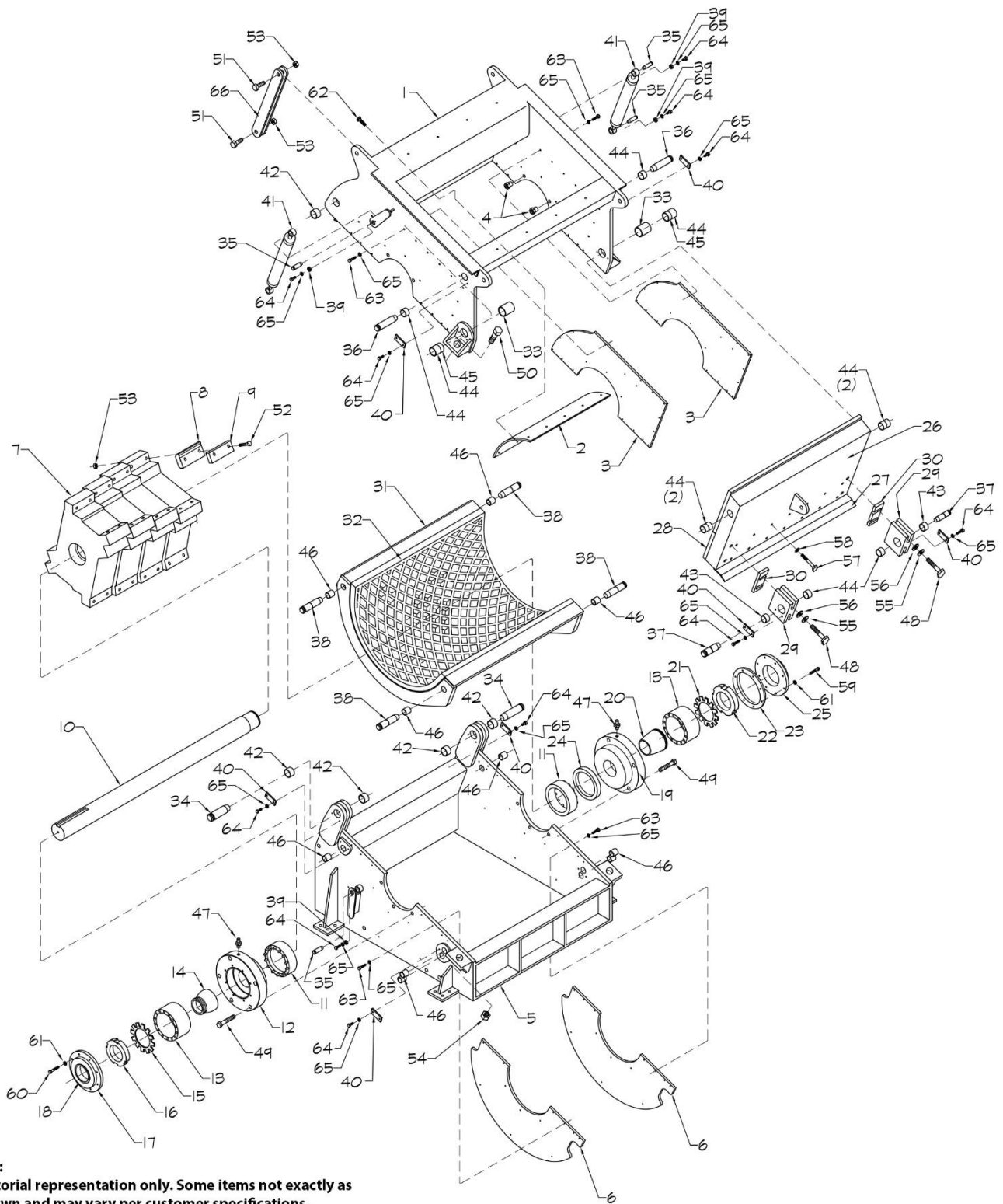
Item #	Part #	Description	Qty
2		Upper Box Rear Liner — Bolt-On	
3		Upper Box Side Liner — <b>Best to replace both side liners at the same time</b>	
6		Lower Box Side Liner — <b>Best to replace both side liners at the same time</b>	
25		Anvil Liner — Bolt-On	
Not Shown		Anvil Liner — Weld-On	
36		Anvil Pivot Pin	
37		Anvil Shear Pin	
31		Grate Assembly	
38		Grate Shear and Pivot Pin	
8		Striker Bars — Tungsten Carbide Overlay / Trimay / Hard Surface <b>Circle One</b>	
32		Striker Bolts	
55		Striker Nuts	

\*For Models: **3636, 3648, 3660, and 4836**, please contact our Parts Department: **604.522.3977** or [parts@brunnettemc.com](mailto:parts@brunnettemc.com)

**Did you know?** Brunette offers a Pneumatic Torque Wrench rental unit to aid in striker bar removal.

The tool and custom jig are shipped complete with operating instructions at a cost of \$575.00 per one week minimum and \$120.00 per additional day. This tool dramatically reduces the time required to replace a set of striker bars and ensures the fasteners are torqued to specification.

For more information please contact Brunette Parts & Service: **604.522.3977** or [parts@brunnettemc.com](mailto:parts@brunnettemc.com)



**Notes:**

1. Pictorial representation only. Some items not exactly as shown and may vary per customer specifications.
2. Item #17 (bearing fixing ring) to be located on the drive side of the Grizzly Mill.
3. Items #14, 15 and 16 (bearing adapter sleeve, lock nut and washer) to be replaced as a matched set.
4. Left hand drive configuration shown
5. Safety brace (Item #66), bolts (item #51) and (2) only nuts (item #53) utilized for maintenance purposes only.